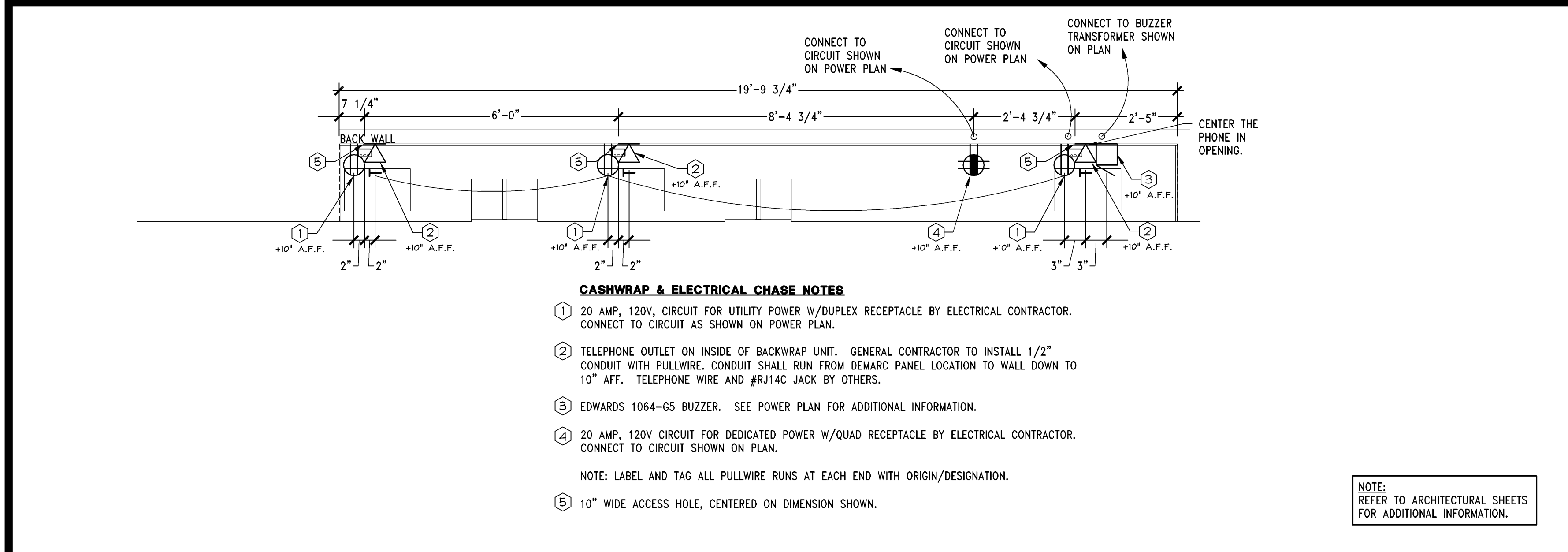
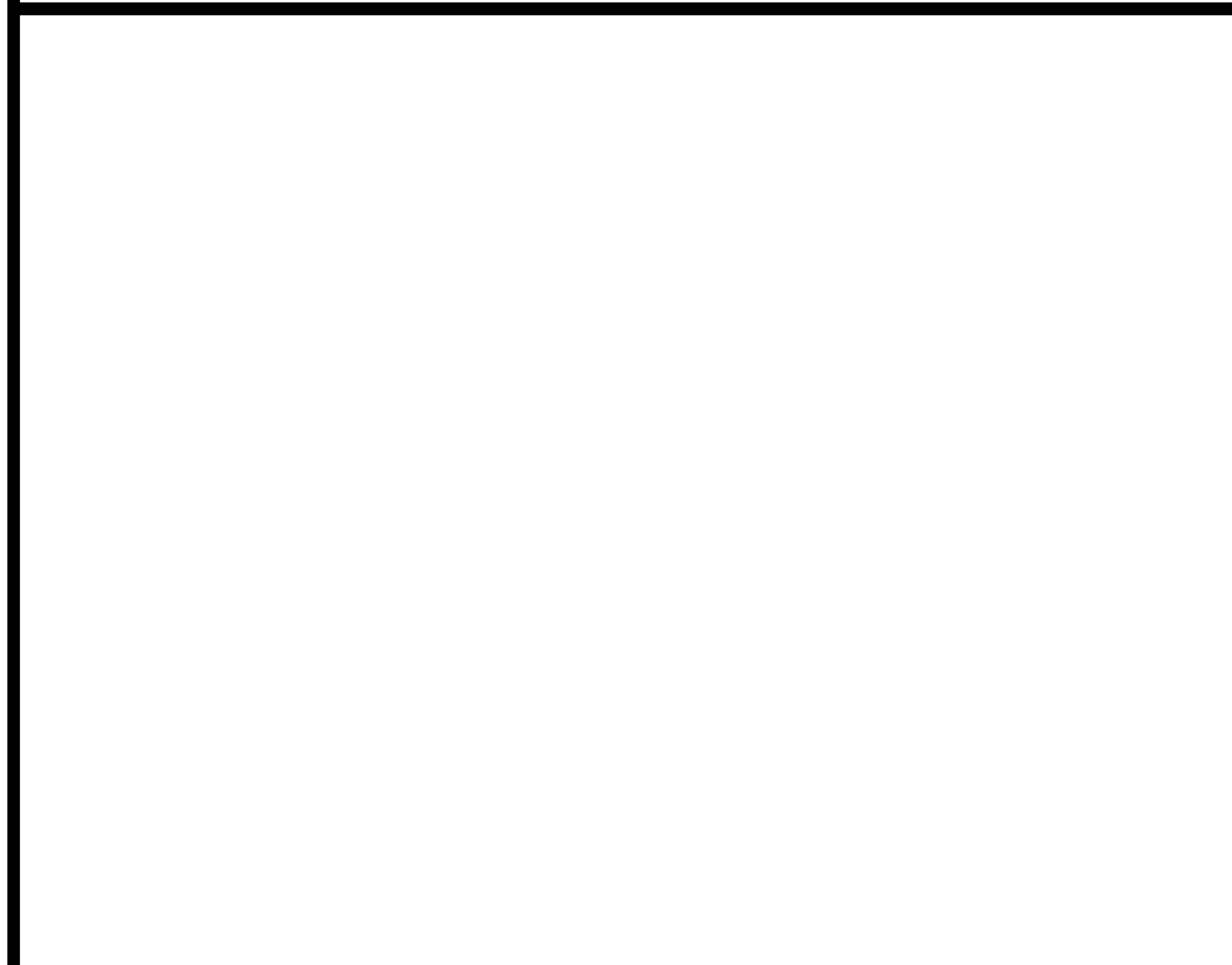


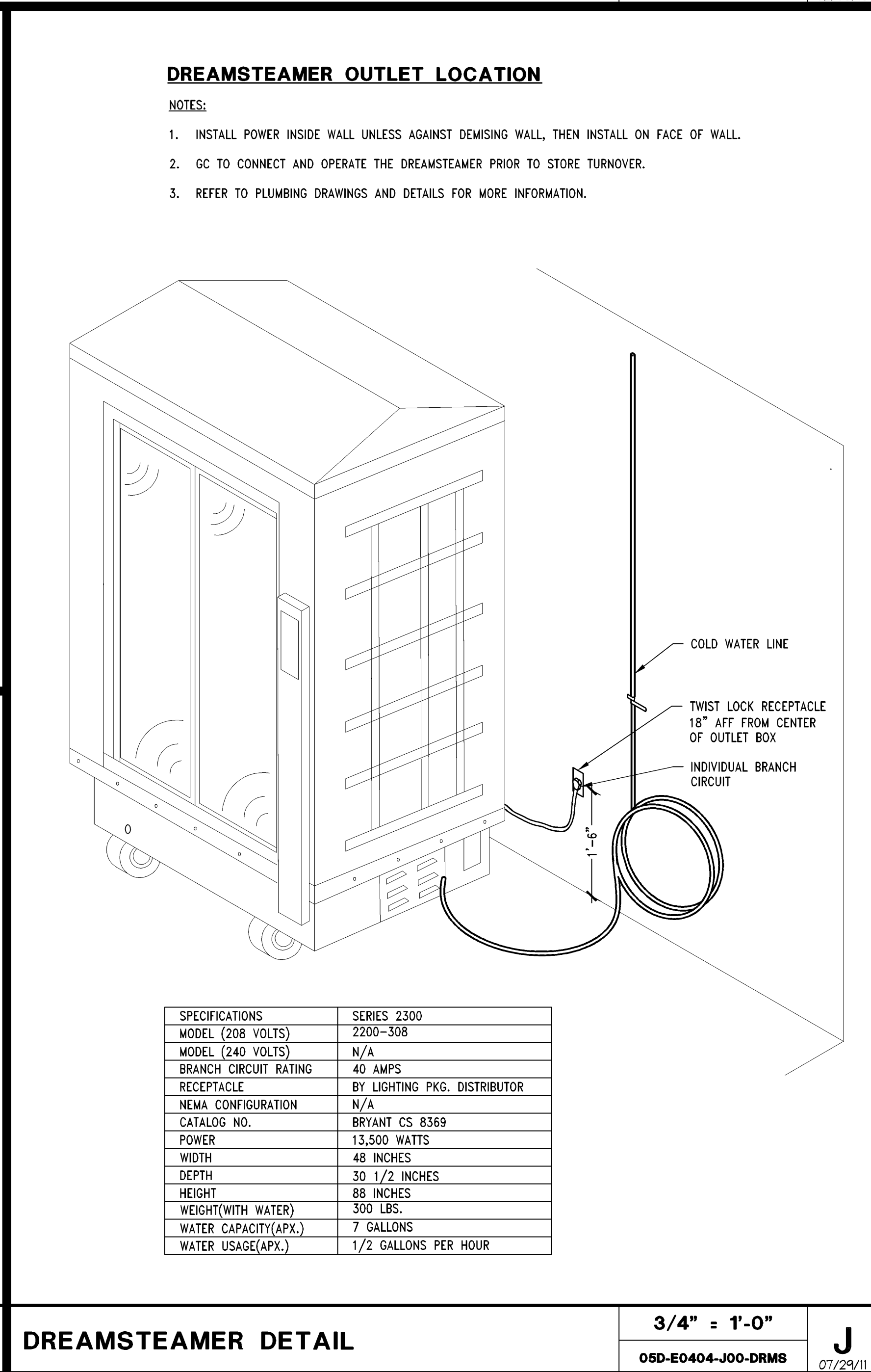
POWER/DATA REQUIREMENTS FOR CASHWRAP	1/2" = 1'-0"	M
	05D-E0404-M00-CW	04/04/14



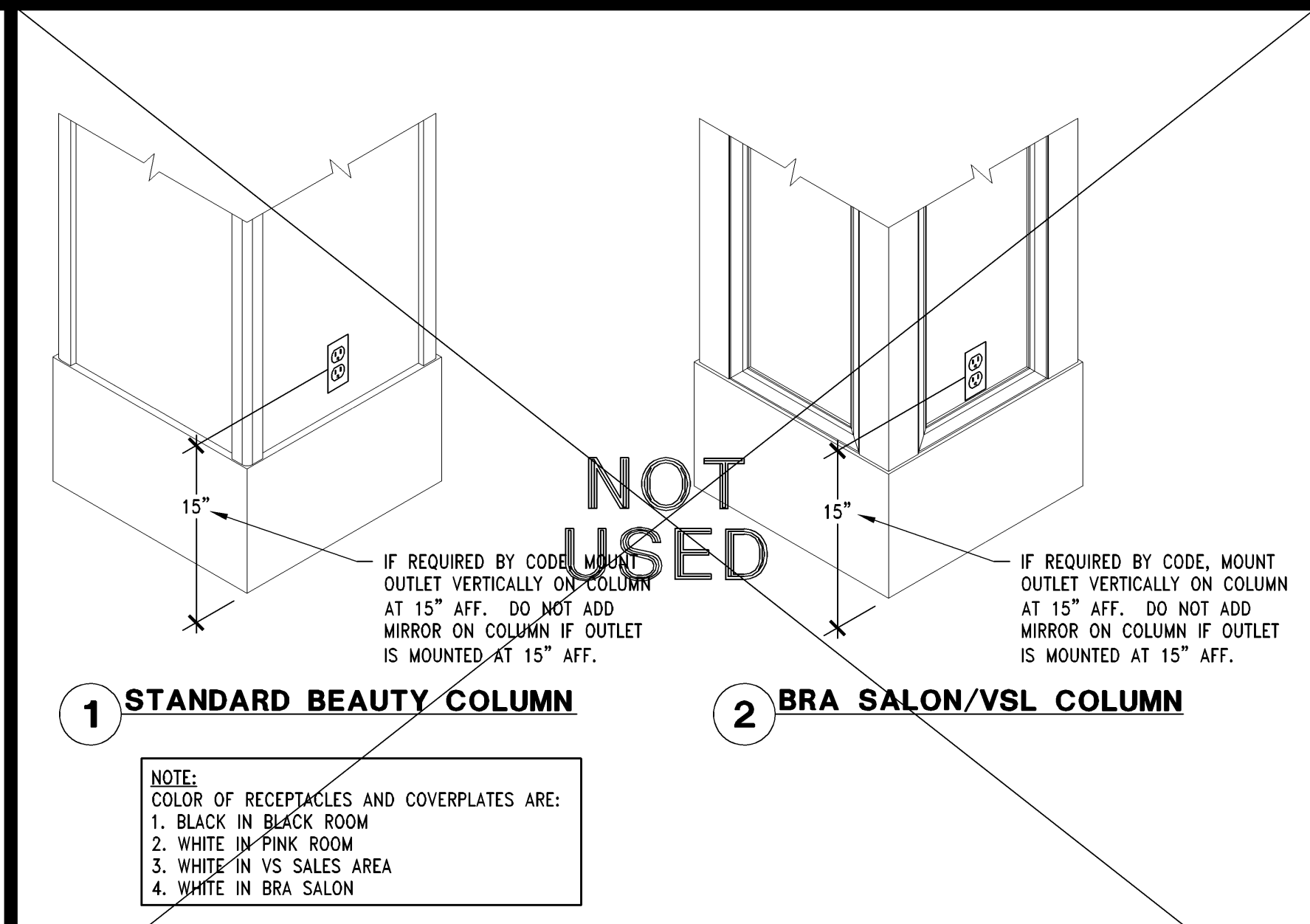
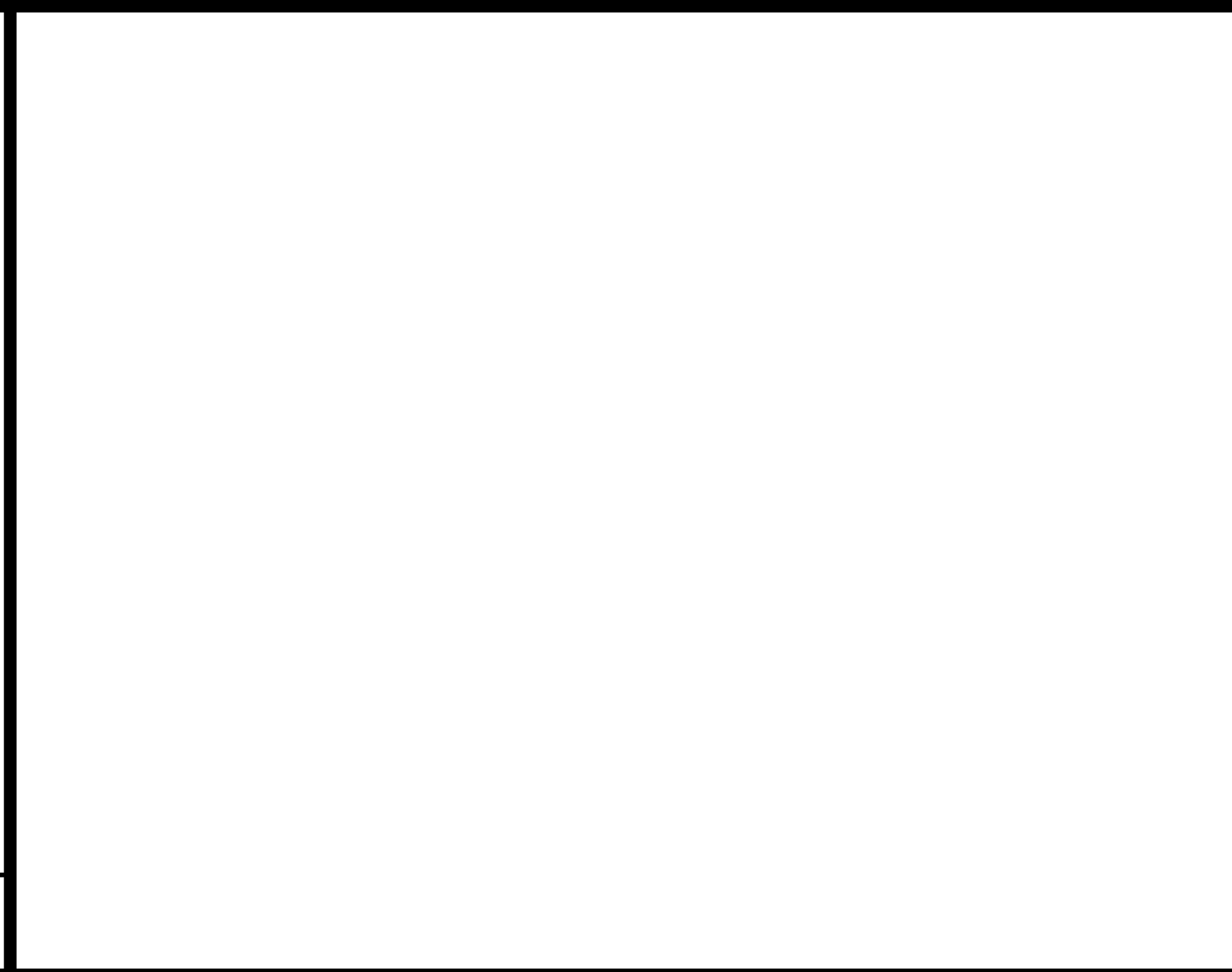
POWER/DATA REQUIREMENTS FOR BACKWRAP - (BW6R-V07)	1/2" = 1'-0"	L
	05D-E0404-L02-BW6R	02/05/13



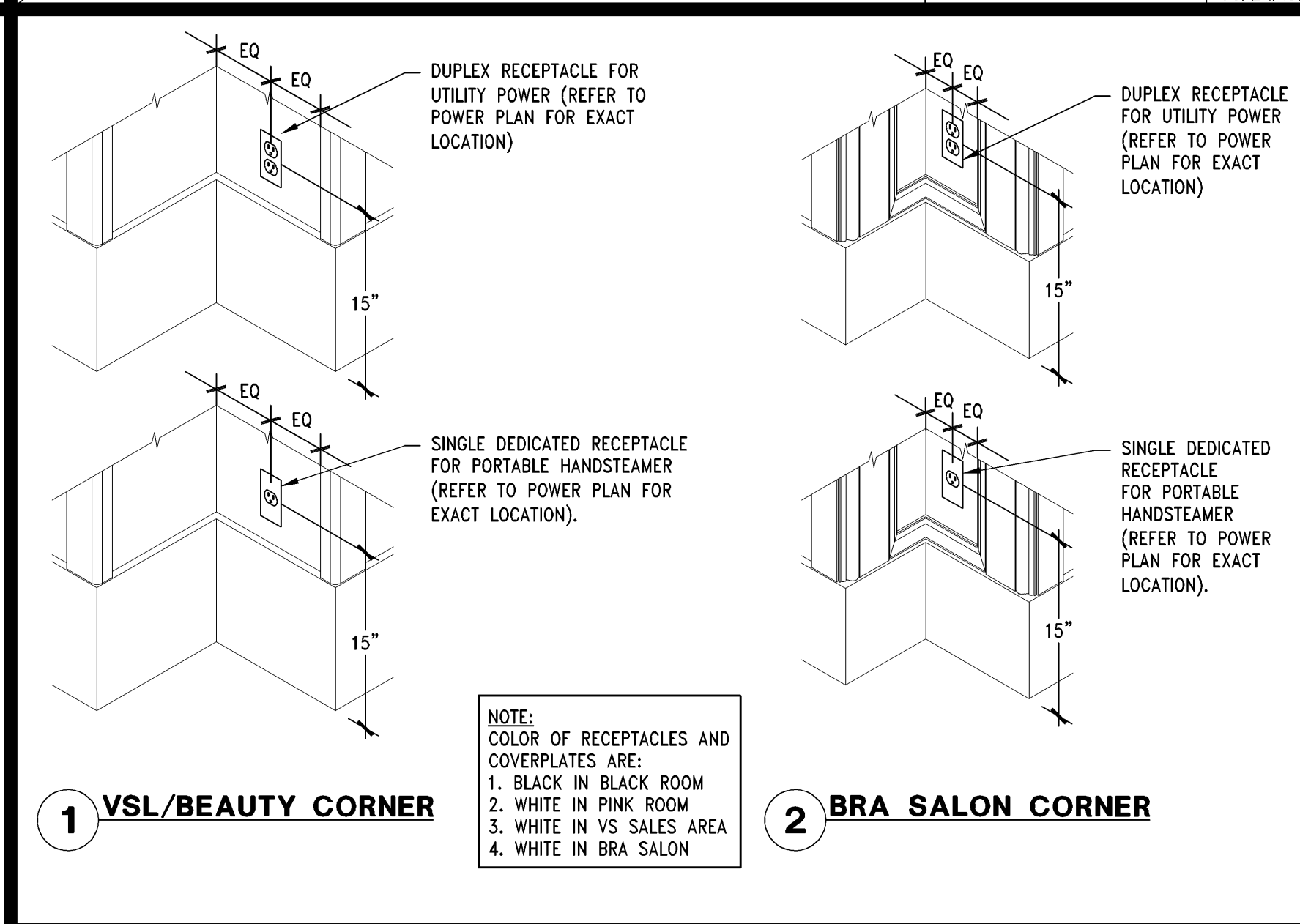
BEAUTY NICHE REC. MOUNTING DETAIL	1" = 1'-0"	N
	05D-E0404-N00-BNRC	07/25/11



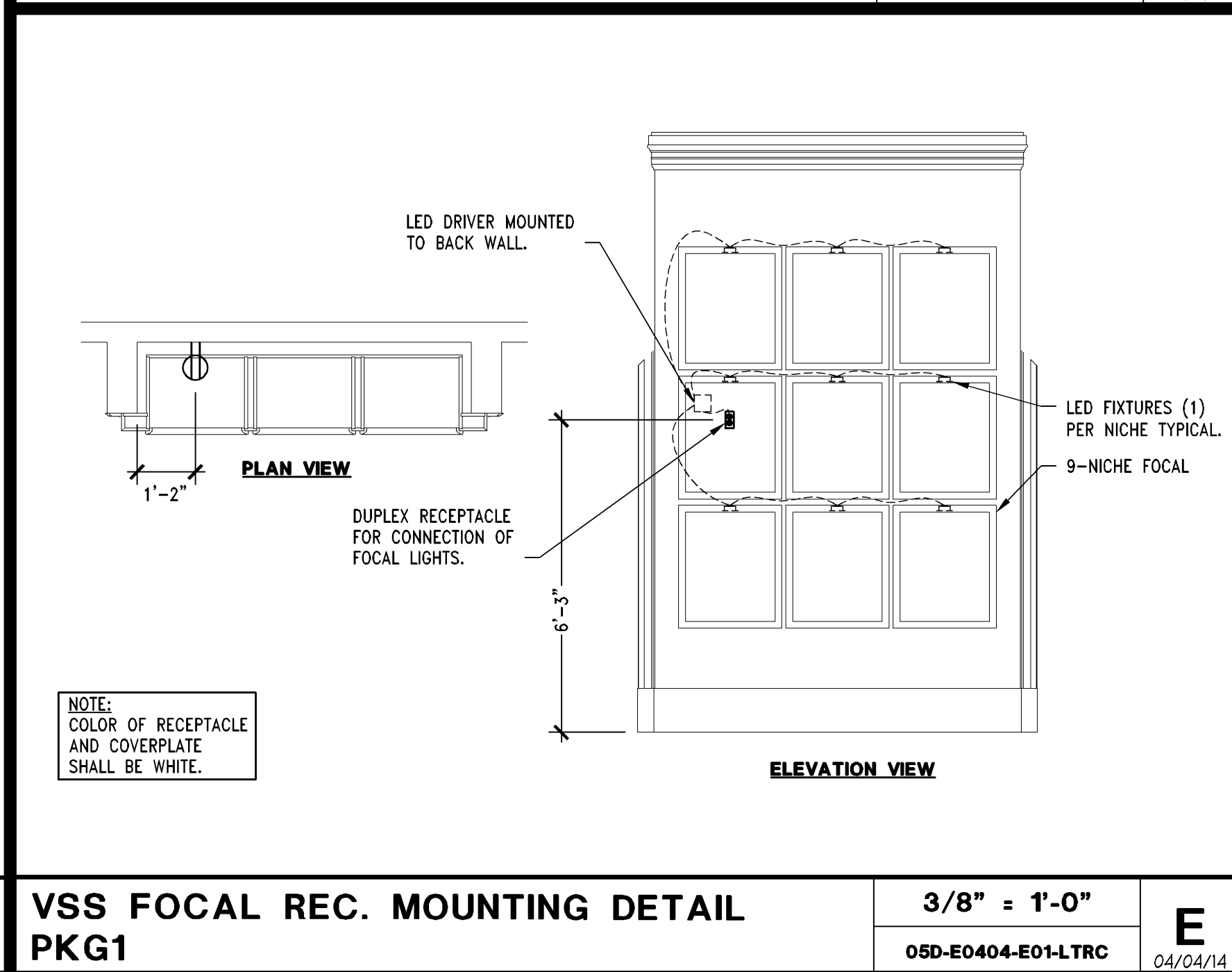
DREAMSTEAMER DETAIL	3/4" = 1'-0"	J
	05D-E0404-J00-DRMS	07/23/11



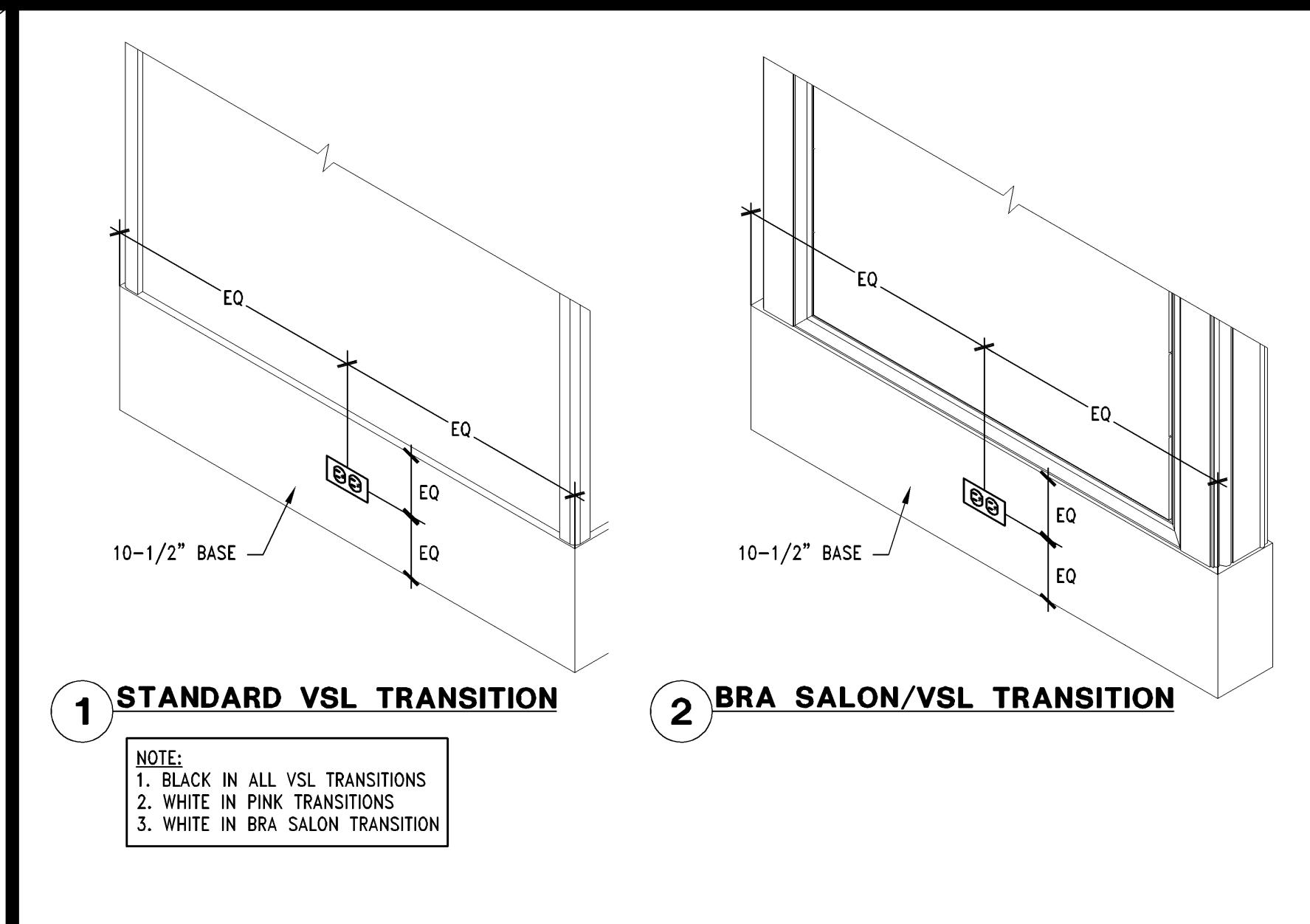
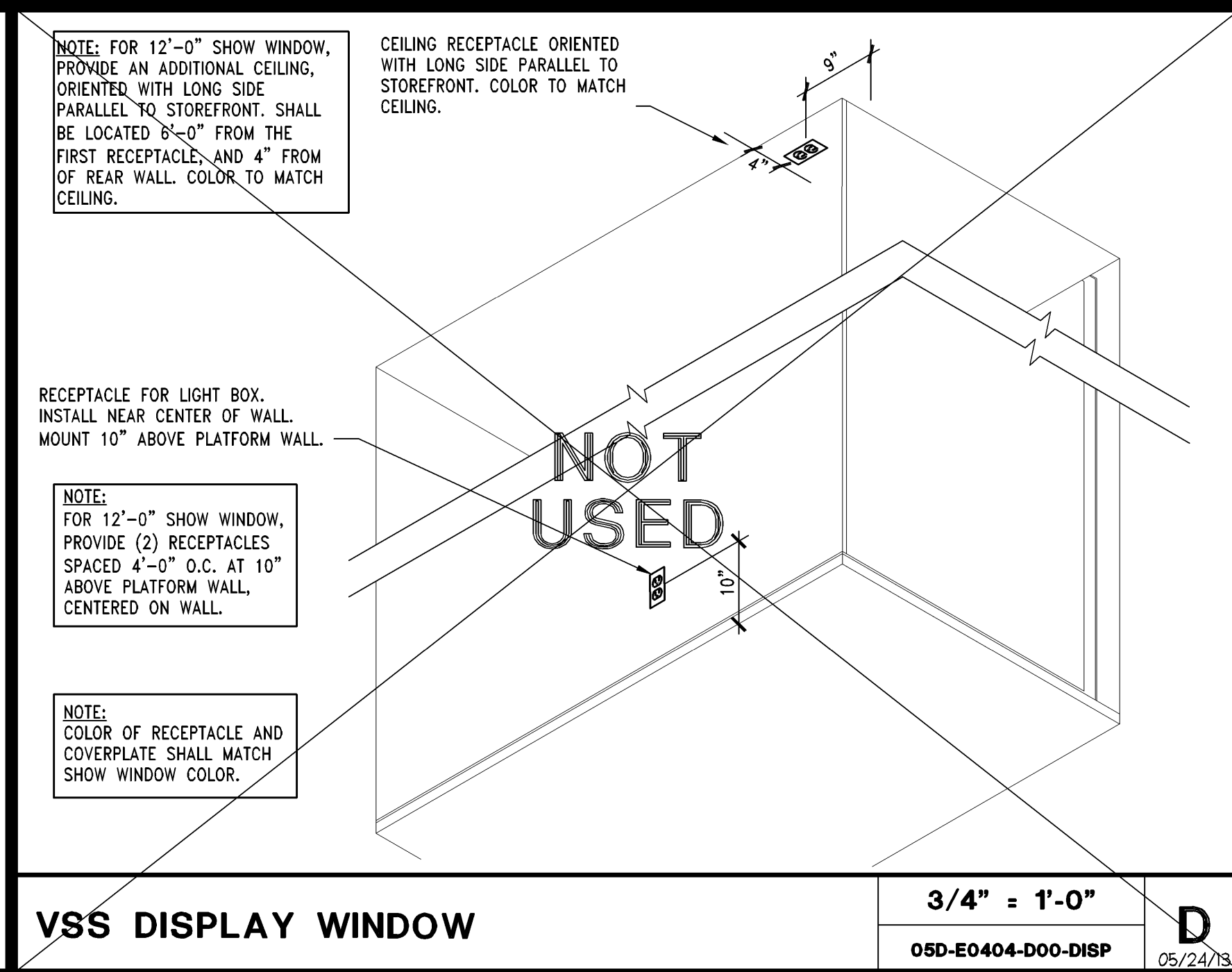
VSS FOCAL REC. MOUNTING DETAIL PKG1	3/8" = 1'-0"	E
	05D-E0404-E01-LTRC	04/04/14



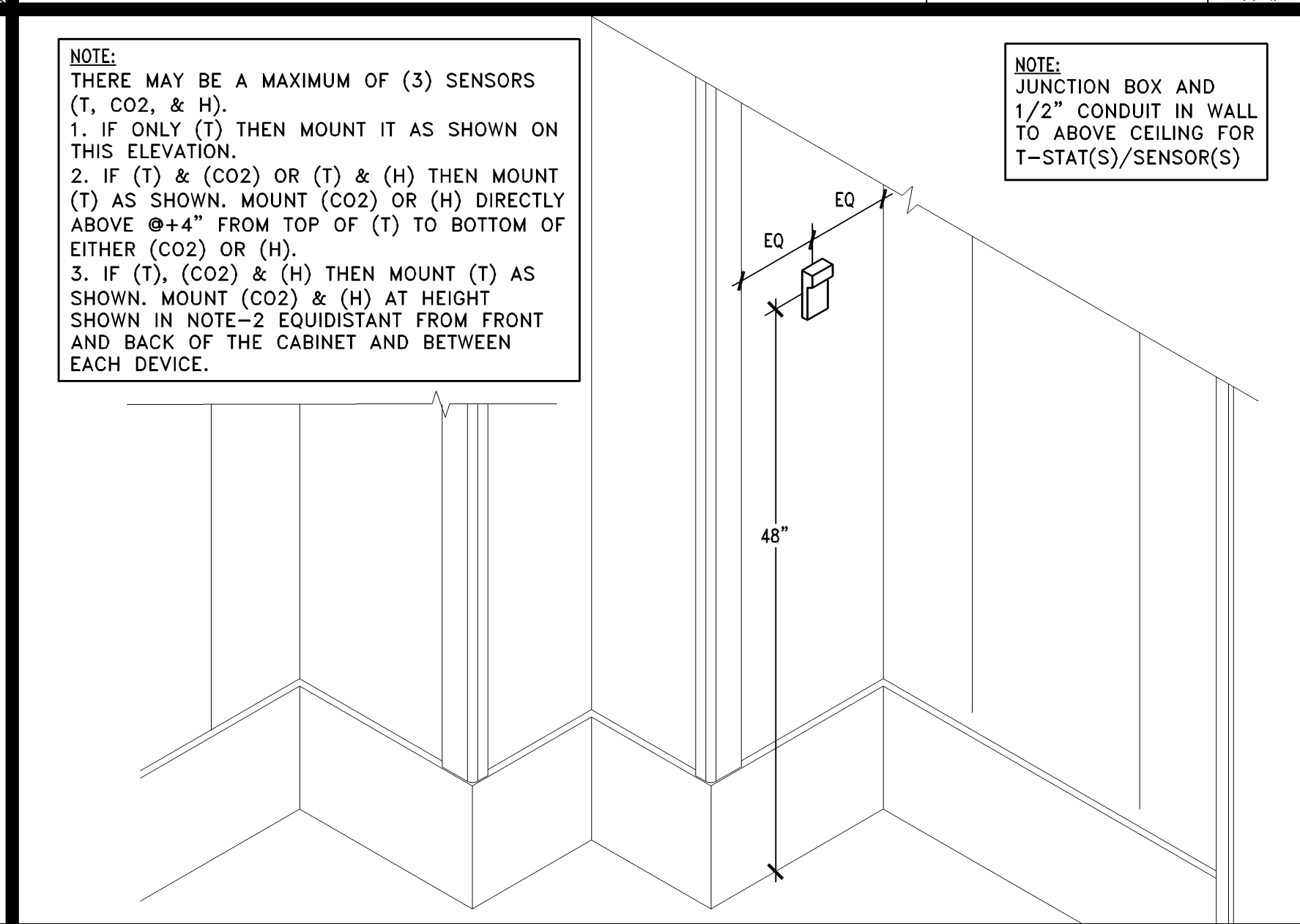
CORNER RECEPTACLE MOUNTING DETAIL	1" = 1'-0"	F
	05D-E0404-F00-RECP	05/10/11



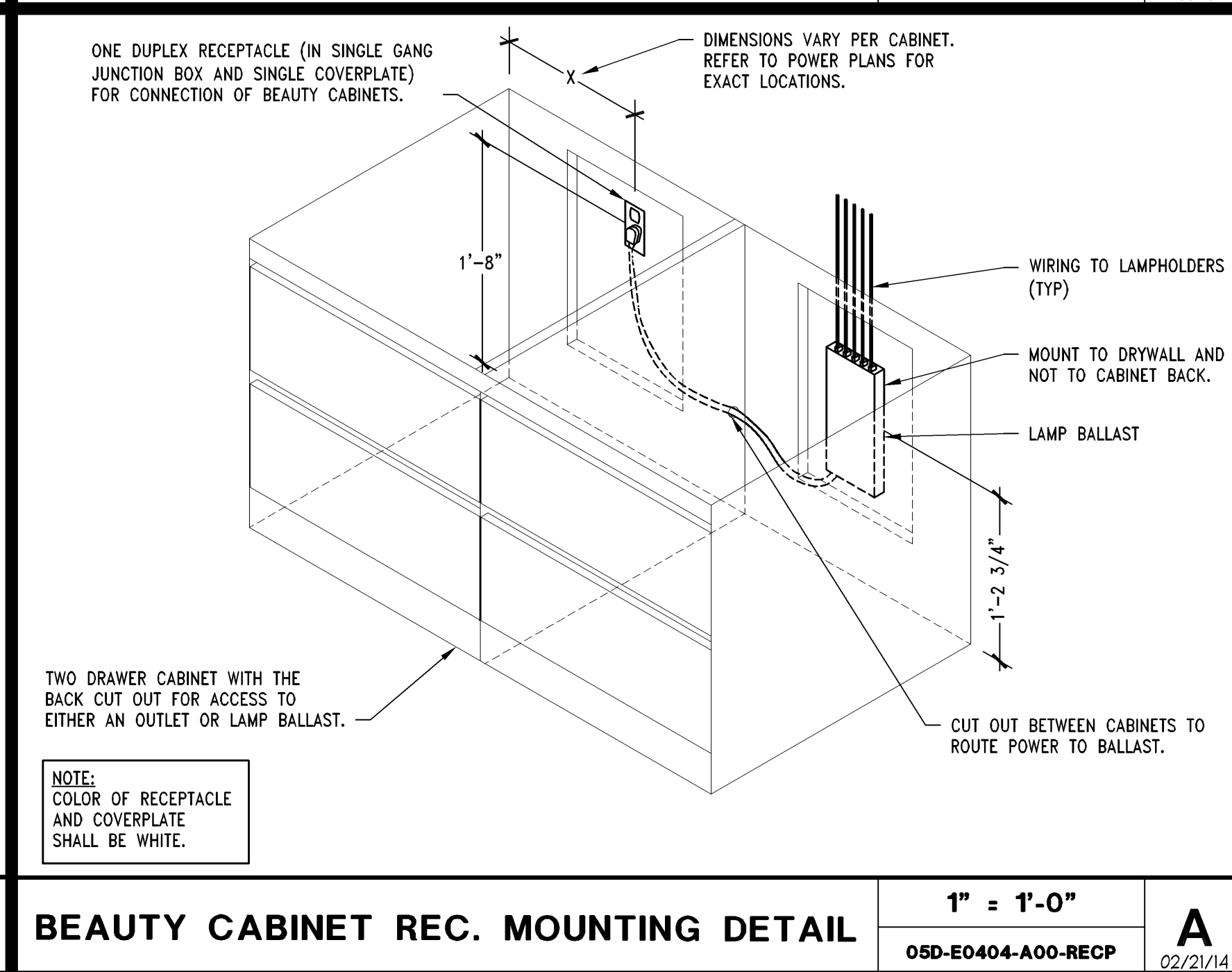
BEAUTY CABINET REC. MOUNTING DETAIL	1" = 1'-0"	A
	05D-E0404-A00-RECP	02/21/14



TRANSITION REC. MOUNTING DETAIL	1" = 1'-0"	C
	05D-E0404-C00-RECP	05/24/13



TEMPERATURE SENSOR MOUNTING DETAIL	1" = 1'-0"	B
	05D-E0404-B00-TSMD	07/25/11



BEAUTY CABINET REC. MOUNTING DETAIL	1" = 1'-0"	A
	05D-E0404-A00-RECP	02/21/14

Thorsen-Baker + Associates
CONSULTING ENGINEERS

3030 West Streetsboro Road
Richfield, Ohio 44286

(330) 659-6668 PH
(330) 659-6675 FAX

Limited brands

LIMITED STORE PLANNING, INC.
d/b/a STORE DESIGN & CONSTRUCTION

Three Limited Parkway - Columbus, Ohio 43230
Telephone: 614-415,7000 • Fax: 614-415,7349

PROJECT INFORMATION:

0105000485

VICTORIA'S SECRET

CAROLINA PLACE

1025 CAROLINA PLACE PKWY
SUITE B-14
PINEVILLE, NC 28134

REFRESH PACKAGE: NMA/ANGELS GENERATIONING 2013 (R131Sa)/142Fg
A/E PROJECT #:

PKG II
2007684009

SCOPE: DESIGN TYPE: LS&AC PROJECT #:

REVISIONS:

REVISIONS	DATE
ELITE CONSTRUCTION GROUP LAKE JACKSON, TX PHONE: 979-285-0712 NOTE: THESE DRAWINGS HAVE BEEN REDUCED BY 50 PERCENT SCALE WILL BE 50 PERCENT OF WHAT IS NOTED ON PLANS	

DATE ISSUED: 9/26/14

DESIGNED BY: RDW

DRAWN BY: TBA

CHECKED BY: JDM

ELECTRICAL DETAILS

DRAWING NUMBER:
E04.04